



Ministry of
Livestock
Development



Kenya Livestock Markets Report, June 2011

National Livestock Marketing Information System

The National Livestock Marketing Information System (NLMIS) applies information communication technology based on the simple message service (SMS) to report on weekly livestock volumes and prices from a network of markets in Kenya. The system provides near real time information to enhance market transparency and support decision making by producers and traders in livestock trade and to inform policy makers and other stakeholders with an interest to track movement in livestock prices as they relate to seasonal patterns. The information also helps track terms of trade for households dependent on livestock as part of their livelihood.

Highlights

- ▶ Government and other stakeholders are working together to ensure that livestock keepers are able to recover as quickly as possible through the provision of livestock in the worst-affected areas, as well as through support to livestock markets, which is intended to ensure that the livestock market is functioning well into future dry seasons. This is complemented by work on drought preparedness through the promotion of animal feed production, use of alternative feed, livelihood diversification and control of animal diseases.
- ▶ According to the KFSSG, priorities for the livestock sector for February to August 2011 include disease surveillance and vaccinations; livestock treatments; hay and feeds supplements; livestock off-take; and Kenya Meat Commission meat processing.
- ▶ Marked deterioration in grazing resources, coupled with severe water scarcity, has caused exceptionally long migrations, heightened clustering of livestock, and resurgence of conflict. Conflicts were reported between communities from Turkana and Pokot counties and those from Isiolo and Samburu counties.
- ▶ Low livestock prices coupled with high and increasing cereal prices are impacting negatively on pastoralist households' food security due to continued erosion of terms of trade.
- ▶ Households are spending more time and walking longer distances in search of water for both human and livestock use due to the serious water scarcity being experienced in many pastoral areas.
- ▶ The 2011 Kenya Camel Forum was held 13-17 June in West Pokot. The forum included presentations that emphasized the role of camel in coping with food insecurity, income generation through the marketing of camel and camel products, and the challenges of climate change even for communities that are non-traditional camel keepers and who are losing their cattle, sheep and goats to the increasing frequency and severity of drought.
- ▶ The Greater Horn of Africa Consensus Climate Outlook for July to September 2011 predicts an increased likelihood of above to near normal rainfall only in Western Kenya while the rest of the country is likely to remain generally dry.



USAID
FROM THE AMERICAN PEOPLE

Livestock Price and Volume Trends

Figure 1 below shows the volume and average price trends of mature camels and cattle while Chart 2 shows the same trends for the same category of sheep and goats in all markets for the period beginning 1st January, 2011 and ending 30th June, 2011. As the long dry season experienced between June and October progresses, the drought situation is likely to worsen and livestock prices are expected to assume a downward trend. Terms of trade for pastoral households are also likely to worsen as the prices of cereals are expected to continue rising due to the shortages being experienced in the country.

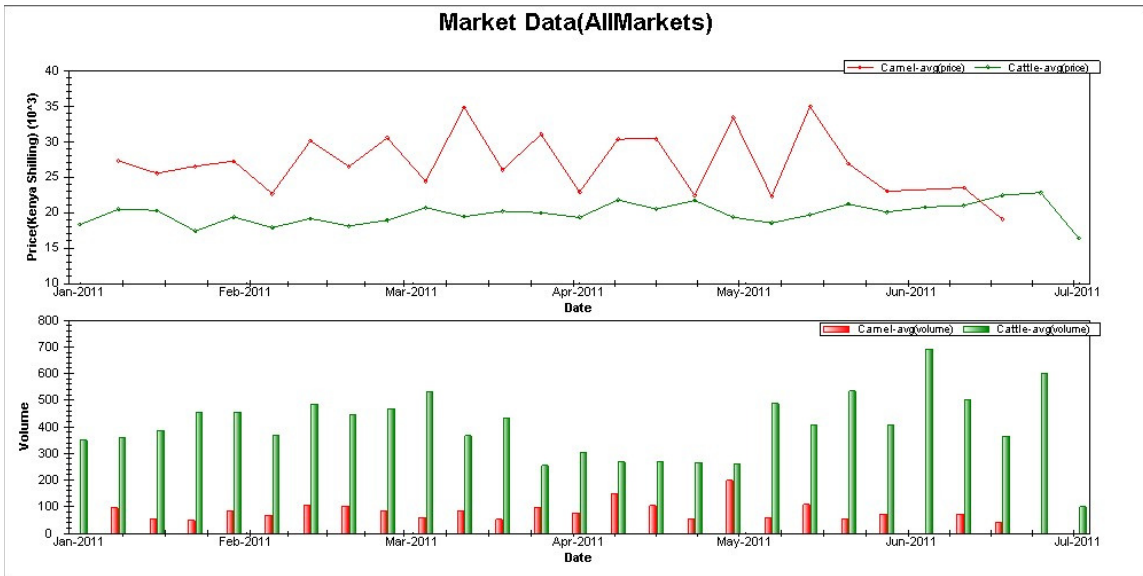


Figure 1: Price and volume trends for camels and cattle, January – June, 2011



Figure 2: Price and volume trends for sheep and goats, January – June, 2011

Source: www.lmiske.net

Monthly Livestock Market Information Report (1/6/2011 - 30/6/2011)

Note: The Current and Previous columns represent prices (Kenya Shillings) as at the end and beginning of the reporting periods (end and beginning of the month) respectively. The dashes (-) indicate that no animals of that category were reported in that market with respect to that reporting period, that is either at the beginning or end of the month or both. The column labeled Change% compares and shows direction of change in prices at the beginning and end of that month. The blue arrow indicates a positive change and the red one indicates a negative change.

G=Grade and reflects animal body condition (G1=Fat, G2=Moderate, G3=Thin, G4=Emaciated).

Cattle Prices

Markets		Barwesa						Chepareria			Chepkono		
Breeds		Mixed			Zebu			Zebu			Mixed		
Price		Current	Previous	Change%	Current	Previous	Change%	Current	Previous	Change%	Current	Previous	Change%
Mature Castrate	G2	19680	-	-	15940	-	-	19400	22600	-14.2 ↓	-	-	-
	G3	-	-	-	-	-	-	-	-	-	-	-	-
Mature Female	G1	-	-	-	-	-	-	-	-	-	21000	21000	0
	G2	-	-	-	-	-	-	15600	19000	-17.9 ↓	20000	17300	15.6 ↑
	G3	14600	-	-	14380	12900	11.4 ↑	13467	13000	3.5 ↑	-	-	-
	G4	10260	-	-	13000	12620	3 ↑	-	-	-	-	-	-
Mature Male	G1	-	-	-	-	-	-	-	-	-	19300	18000	7.2 ↑
	G2	-	-	-	18400	-	-	21125	19550	8 ↑	-	-	-
	G3	14400	-	-	-	-	-	-	-	-	-	-	-
	G4	-	-	-	-	-	-	-	-	-	-	-	-
Young Castrate	G2	-	-	-	-	-	-	-	-	-	-	-	-
	G3	-	-	-	-	-	-	-	-	-	-	-	-
Young Female	G2	-	-	-	-	-	-	9475	12275	-22.9 ↓	-	-	-
	G3	-	-	-	-	-	-	-	-	-	-	-	-
Young Male	G2	-	-	-	-	-	-	11400	10425	9.3 ↑	-	-	-
	G3	-	-	-	-	-	-	-	-	-	-	-	-

Markets		Emali						Ewaso Nyiro			Garissa		
Breeds		Mixed			Zebu			Zebu			Boran		
Price		Current	Previous	Change%	Current	Previous	Change%	Current	Previous	Change%	Current	Previous	Change%
Mature Castrate	G2	48000	45800	4.8 ↑	41467	35600	16.4 ↑	30533	28000	9 ↑	-	-	-
	G3	-	-	-	-	-	-	27200	21900	24.2 ↑	-	-	-
Mature Female	G1	-	-	-	-	-	-	-	-	-	-	-	-
	G2	-	-	-	-	-	-	20600	22900	-10.1 ↓	14030	17127	-18.1 ↓
	G3	30600	31400	-2.6 ↓	27933	26050	7.2 ↑	16587	16970	-2.3 ↓	15032	13875	8.3 ↑
	G4	-	-	-	-	-	-	-	-	-	-	-	-
Mature Male	G1	-	-	-	-	-	-	-	-	-	-	-	-
	G2	-	-	-	-	-	-	39050	35600	9.6 ↑	22120	17033	29.8 ↑
	G3	44300	43900	0.9 ↑	40950	38350	6.7 ↑	-	-	-	20650	16100	28.2 ↑
Young Castrate	G4	-	-	-	-	-	-	-	-	-	-	-	-
	G2	-	-	-	-	-	-	-	-	-	-	-	-
Young Female	G3	-	-	-	-	-	-	-	-	-	-	-	-
	G2	-	-	-	-	-	-	-	-	-	-	-	-
Young Male	G2	-	-	-	-	-	-	-	-	-	12510	9000	38.9 ↑
	G3	-	-	-	-	-	-	-	-	-	10990	8100	35.6 ↑

Markets		Garsen			Kiserian						Lolkuniyiani		
Breeds		Boran			Boran			Mixed			Mixed		
Price		Current	Previous	Change%	Current	Previous	Change%	Current	Previous	Change%	Current	Previous	Change%
Mature Castrate	G2	-	-	-	-	-	-	-	-	-	23500	32900	-28.6 ↓
	G3	-	-	-	-	-	-	-	-	-	-	-	-
Mature Female	G1	-	-	-	44250	48750	-9.3 ↓	40000	49000	-18.4 ↓	-	-	-
	G2	16825	17033	-1.3 ↓	26500	31000	-14.6 ↓	27500	32000	-14.1 ↓	-	-	-
	G3	-	-	-	-	-	-	-	-	-	-	-	-
	G4	-	-	-	-	-	-	-	-	-	-	-	-
Mature Male	G1	-	-	-	49750	54500	-8.8 ↓	47000	55000	-14.6 ↓	-	-	-
	G2	28525	29667	-3.9 ↓	30500	35000	-12.9 ↓	28500	35000	-18.6 ↓	-	-	-
	G3	-	-	-	-	-	-	-	-	-	-	-	-
	G4	-	-	-	-	-	-	-	-	-	-	-	-
Young Castrate	G2	-	-	-	-	-	-	-	-	-	-	-	-
	G3	-	-	-	-	-	-	-	-	-	-	-	-
Young Female	G2	10750	9500	13.1 ↑	-	-	-	-	-	-	-	-	-
	G3	-	-	-	-	-	-	-	-	-	-	-	-
Young Male	G2	9950	10333	-3.8 ↓	-	-	-	-	-	-	-	-	-
	G3	-	-	-	-	-	-	-	-	-	-	-	-

Markets		Marigat			Mombasa			Moyale			Mulot		
Breeds		Zebu			Mixed			Boran			Mixed		
Price		Current	Previous	Change%	Current	Previous	Change%	Current	Previous	Change%	Current	Previous	Change%
Mature Castrate	G2	30860	34460	-10.5 ↓	-	-	-	-	-	-	32000	31000	3.2 ↑
	G3	-	-	-	-	-	-	-	-	-	25375	26000	-2.5 ↓
Mature Female	G1	-	-	-	-	-	-	-	-	-	-	-	-
	G2	19860	-	-	22430	24040	-6.7 ↓	8880	11990	-26 ↓	-	-	-
	G3	-	-	-	14500	15384	-5.8 ↓	-	-	-	18750	19000	-1.4 ↓
Mature Male	G4	-	-	-	6190	7900	-21.7 ↓	-	-	-	-	-	-
	G1	-	-	-	-	-	-	-	-	-	-	-	-
	G2	26180	27400	-4.5 ↓	24400	25580	-4.7 ↓	18300	-	-	25500	29000	-12.1 ↓
	G3	-	-	-	15250	16060	-5.1 ↓	-	-	-	18625	20333	-8.5 ↓
Young Castrate	G4	-	-	-	6000	7690	-22 ↓	-	-	-	15125	17000	-11.1 ↓
	G2	-	-	-	-	-	-	-	-	-	-	-	-
Young Female	G3	-	-	-	-	-	-	-	-	-	-	-	-
	G2	-	-	-	-	-	-	-	-	-	10125	12000	-15.7 ↓
Young Male	G3	10580	13440	-21.3 ↓	-	-	-	-	-	-	-	-	-
	G2	-	-	-	-	-	-	-	-	-	8875	13000	-31.8 ↓
	G3	11860	13940	-15 ↓	-	-	-	-	-	-	-	-	-

Markets		Nairobi (Dagoretti)			Nairobi (Njiru)			Nginyang			Rumuruti					
Breeds		Zebu			Boran			Zebu			Mixed			Zebu		
Price		Current	Previous	Change%	Current	Previous	Change%	Current	Previous	Change%	Current	Previous	Change%	Current	Previous	Change%
Mature Castrate	G2	31867	30400	4.8 ↑	27500	27429	0.2 ↑	-	-	-	-	-	-	-	-	-
	G3	26747	26007	2.8 ↑	23500	23143	1.5 ↑	-	-	-	38600	31300	23.3 ↑	30600	-	-
Mature Female	G1	-	-	-	-	-	-	-	-	-	-	-	-	-	-	-
	G2	26900	26627	1 ↑	17750	17857	-0.6 ↓	-	-	-	-	-	-	-	-	-
	G3	24261	23347	3.9 ↑	14083	14438	-2.5 ↓	8260	6880	20.1 ↑	-	-	-	22500	26800	-16.1 ↓
	G4	-	-	-	-	-	-	-	-	-	-	-	-	11967	-	-
Mature Male	G1	-	-	-	-	-	-	-	-	-	-	-	-	-	-	-
	G2	30040	28750	4.4 ↑	-	-	-	-	-	-	-	-	-	-	-	-
	G3	25567	25615	-0.2 ↓	-	-	-	14780	-	-	33400	-	-	29000	-	-
	G4	-	-	-	-	-	-	-	-	-	-	-	-	20400	-	-
Young Castrate	G2	-	-	-	-	-	-	-	-	-	-	-	-	29000	-	-
	G3	-	-	-	-	-	-	-	-	-	-	-	-	23200	21800	6.4 ↑
Young Female	G2	-	-	-	-	-	-	-	-	-	-	-	-	-	-	-
	G3	-	-	-	-	-	-	-	-	-	24200	-	-	-	-	-
Young Male	G2	-	-	-	-	-	-	-	-	-	-	-	-	-	-	-
	G3	-	-	-	-	-	-	-	-	-	-	-	-	19200	-	-

Summary

- Markets that recorded more than 10% increase in average prices include Barwesa, Chepareria, Chepkono, Garissa, Nginyang and Rumuruti. Except Chepkono, all these markets also recorded more grade 3 animals because of weakened body condition due to the continuing drought. The highest increases were recorded in Garissa where the price of young male boran went up by 38.6% from 9000/- to 12510/- while that of mature male grade 2 went up by 29.8% from 17033/- to 22120/-. In Rumuruti, the price of mature castrate cattle of mixed breeds went up by 23.3% from 31300/- to 38600/- while Barwesa and Nginyang recorded 11.4% and 20.5% increase in the price of mature female grade 3 zebu cattle from 12900/- to 14380/- and 6880/- to 8260/- respectively.
- Markets that recorded more than 10% drop in average prices are Chepareria, Kiserian, Marigat, Mombasa and Mulot. The highest drop was observed in Mulot and Kiserian where the price of mixed young male grade 2 and mature male grade 2 went down by 31.8% and 18.6% from 13000/- to 8875/- and 35010/- to 28500/- respectively. In Kiserian, prices of mixed mature female grades 1 and 2 went down by 18.4% and 14.1% from 49000/- to 40000/- and 32000/- to 27500/- respectively while the price of mature male grade 1 went down by 14.6% from 55000/- to 47000/-. At the same time, the prices of mature male and female grade 2 boran were down by 12.9% and 14.6% from 35000/- to 30500/- and 31000/- to 28500/- respectively. Kiserian offered the highest prices for both mixed and boran cattle.

Goat Prices

Markets		Chepareria			Chepkono			Garissa			Habaswein			Lodwar		
Breeds		East African			Mixed			Somali			Somali			East African		
Price		Current	Previous	Change%	Current	Previous	Change%	Current	Previous	Change%	Current	Previous	Change%	Current	Previous	Change%
Mature Castrate	G1	3490	-	-	-	-	-	-	-	-	-	-	-	-	-	-
	G2	-	-	-	-	-	-	-	-	-	-	-	-	-	-	-
	G3	-	-	-	-	-	-	-	-	-	-	-	-	-	-	-
	G4	-	-	-	-	-	-	-	-	-	-	-	-	1950	-	-
Mature Female	G1	2168	2720	-20.3 ↓	-	-	-	-	-	-	-	-	-	2500	-	-
	G2	-	-	-	2500	2520	-0.8 ↓	2530	2720	-7 ↓	-	-	-	2220	-	-
	G3	-	-	-	-	-	-	1515	1750	-13.5 ↓	1978	1780	11.1 ↑	1850	-	-
	G4	-	-	-	-	-	-	-	-	-	1404	995	41.1 ↑	-	-	-
Mature Male	G1	2965	3185	-7 ↓	2600	-	-	-	-	-	-	-	-	2950	-	-
	G2	-	-	-	-	-	-	3680	-	-	-	-	-	2750	-	-
	G3	-	-	-	-	-	-	2700	-	-	-	-	-	2520	-	-
	G4	-	-	-	-	-	-	-	-	-	-	-	-	-	-	-
Young Castrate	G2	-	-	-	-	-	-	-	-	-	-	-	-	-	-	-
Young Female	G1	1637	1915	-14.6 ↓	-	-	-	-	-	-	-	-	-	1000	-	-
	G2	-	-	-	-	-	-	-	-	-	-	-	-	-	-	-
Young Male	G1	1855	1768	4.9 ↑	-	-	-	-	-	-	-	-	-	1300	-	-
	G2	-	-	-	-	-	-	-	-	-	-	-	-	-	-	-
	G3	-	-	-	-	-	-	-	-	-	1156	890	29.8 ↑	-	-	-

Markets		Mombasa			Mulot			Nairobi (Kiamaiko)			Nginyang			Rumuruti		
Breeds		Mixed			Mixed			Somali			East African			East African		
Price		Current	Previous	Change%	Current	Previous	Change%	Current	Previous	Change%	Current	Previous	Change%	Current	Previous	Change%
Mature Castrate	G1	-	-	-	5062	4850	4.3 ↑	-	-	-	-	-	-	-	-	-
	G2	-	-	-	-	-	-	-	-	-	-	-	-	6000	-	-
	G3	-	-	-	-	-	-	-	-	-	-	-	-	4760	4000	18.9 ↑
	G4	-	-	-	-	-	-	-	-	-	-	-	-	-	-	-
Mature Female	G1	-	-	-	4075	4025	1.2 ↑	-	-	-	-	-	-	-	-	-
	G2	2400	2418	-0.8 ↓	3400	3425	-0.8 ↓	3425	3500	-2.2 ↓	-	-	-	4620	3340	38.3 ↑
	G3	1570	1623	-3.3 ↓	-	-	-	-	-	-	2013	1696	18.6 ↑	3950	3307	19.4 ↑
	G4	-	-	-	2175	1925	12.9 ↑	2200	2350	-6.4 ↓	-	-	-	2510	-	-
Mature Male	G1	-	-	-	-	-	-	3850	4000	-3.8 ↓	-	-	-	-	-	-
	G2	2690	2602	3.3 ↑	3800	-	-	-	-	-	-	-	-	-	-	-
	G3	1615	1708	-5.5 ↓	3412	3225	5.7 ↑	2875	2950	-2.6 ↓	1986	-	-	3830	-	-
	G4	-	-	-	-	-	-	-	-	-	-	-	-	2400	-	-
Young Castrate	G2	-	-	-	-	-	-	-	-	-	1534	1436	6.8 ↑	2880	-	-
Young Female	G1	-	-	-	-	-	-	-	-	-	-	-	-	-	-	-
	G2	-	-	-	1450	1350	7.4 ↑	-	-	-	-	-	-	-	-	-
Young Male	G1	-	-	-	-	-	-	-	-	-	-	-	-	-	-	-
	G2	-	-	-	1450	1462	-0.9 ↓	-	-	-	1488	-	-	2700	3100	-13 ↓
	G3	-	-	-	-	-	-	-	-	-	-	-	-	2260	2300	-1.8 ↓

Summary

- A marked increase in average prices of goats was recorded in Habaswein, Nginyang, and Rumuruti. In Habaswein, prices of mature female grade 3 and young male grade 3 somali goats were up by 11.1% and 29.8% from 1780/- to 1978/- and 890/- to 1156/- respectively while in Nginyang, the price of mature female grade 3 east african goats went up by 18.6% up from 1696/- to 2013/- . In Rumuruti, prices of mature castrate grade 3 and mature female grade 3 east african went up by 18.9% from 4000/- to 4760/- and 3340/- to 4620/- respectively.
- Markets that recorded a drop in average prices are Chepareria and Garissa. In Chepareria, prices of mature female grade 1 and young female grade 1 east african went down by 20.3% and 14.6% from 2720/- to 2168/- and 1915/- to 1637/- respectively while in Garissa, the price of mature female grade 3 somali went down by 13.5% from 1750/- to 1515/-. The presence of an increasing number of grade 3 and 4 goats is a manifestation of the worsening drought situation that is likely to persist over the long dry season between June and October. Poor grade 4 goats were observed in Lodwar, Habaswein, Rumuruti and Mulot.

Sheep Prices

Markets		Chepareria			Chepkono			Garissa			Habaswein			Mombasa		
Breeds		Mixed			Mixed			Black head persian			Black head persian			Mixed		
Price		Current	Previous	Change%	Current	Previous	Change%	Current	Previous	Change%	Current	Previous	Change%	Current	Previous	Change%
Mature Castrate	G1	-	-	-	-	-	-	-	-	-	-	-	-	-	-	-
	G2	-	-	-	-	-	-	-	-	-	-	-	-	-	-	-
Mature Female	G1	2445	2190	11.6 ↑	2500	2500	0	-	-	-	-	-	-	-	-	-
	G2	-	-	-	1980	1910	36.6 ↑	-	-	-	-	-	-	1740	2168	-19.8 ↓
	G3	-	-	-	-	-	-	1276	1670	-23.6 ↓	1338	1258	6.3 ↑	1275	1464	-13 ↓
	G4	-	-	-	-	-	-	-	-	-	-	-	-	-	-	-
Mature Male	G1	3145	3040	3.4 ↑	3247	2640	22.9 ↑	-	-	-	-	-	-	-	-	-
	G2	-	-	-	-	-	-	-	-	-	-	-	-	1965	2332	-15.8 ↓
	G3	-	-	-	-	-	-	-	-	-	-	-	-	1370	1504	-9 ↓
Young Female	G1	1755	1715	2.3 ↑	-	-	-	-	-	-	-	-	-	-	-	-
	G2	-	-	-	-	-	-	-	-	-	-	-	-	-	-	-
Young Male	G1	1855	1565	18.5 ↑	-	-	-	-	-	-	-	-	-	-	-	-
	G2	-	-	-	-	-	-	-	-	-	-	-	-	-	-	-
	G3	-	-	-	-	-	-	-	-	-	-	-	-	-	-	-
	G4	-	-	-	-	-	-	-	-	-	606	649	-6.7 ↓	-	-	-

Markets		Mulot			Nginyang			Rumuruti						Suguta		
Breeds		Mixed			Black head persian			Black head persian			Red head Maasai			Red head Maasai		
Price		Current	Previous	Change%	Current	Previous	Change%	Current	Previous	Change%	Current	Previous	Change%	Current	Previous	Change%
Mature Castrate	G1	5188	4875	6.4 ↑	-	-	-	-	-	-	-	-	-	-	-	-
	G2	-	-	-	2304	-	-	-	-	-	-	-	-	-	-	-
Mature Female	G1	-	-	-	-	-	-	-	-	-	-	-	-	-	-	-
	G2	3562	3300	7.9 ↑	-	-	-	-	-	-	-	-	-	3000	3170	-5.4 ↓
	G3	2350	2300	2.1 ↑	2184	-	-	3367	3380	-0.4 ↓	3520	3627	-3 ↓	-	-	-
	G4	-	-	-	-	-	-	-	-	-	2300	-	-	-	-	-
Mature Male	G1	4562	4250	7.3 ↑	-	-	-	-	-	-	-	-	-	-	-	-
	G2	-	-	-	-	-	-	4570	-	-	4140	-	-	3120	3478	-10.3 ↓
	G3	-	-	-	2266	-	-	3350	3820	-12.4 ↓	3560	-	-	-	-	-
Young Female	G1	-	-	-	-	-	-	-	-	-	-	-	-	-	-	-
	G2	1400	1425	-1.8 ↓	-	-	-	-	-	-	3020	-	-	-	-	-
Young Male	G1	-	-	-	-	-	-	-	-	-	-	-	-	-	-	-
	G2	1512	1600	-5.6 ↓	-	-	-	2695	3200	-15.8 ↓	2620	3160	-17.1 ↓	-	-	-
	G3	-	-	-	-	-	-	2300	2260	1.7 ↑	1960	2260	-13.3 ↓	-	-	-
	G4	-	-	-	-	-	-	-	-	-	-	-	-	-	-	-

Summary

- Chepareria and Chepkono are the only markets that recorded a marked improvement in average prices of sheep. In Chepareria, the prices of mixed mature female grade 1 and young male grade 1 went up by **11.6%** and **18.5%** from 2190/- to 2445/- and 1565/- to 1855/- respectively while in Chepkono, the prices of mixed mature male grade 1 and mature female grade 2 went up by **22.9%** and **36.6%** from 2640/- to 3247/- and 1910/- to 1980/- respectively.
- Garissa, Mombasa, and Rumuruti recorded a marked decrease in average prices of sheep. In Garissa, the price of blackhead persian mature female grade 3 went down by **23.6%** from 1570/- to 1276/- while in Mombasa, prices of mature male and female grade 2 went down by **15.8%** and **19.8%** from 2332/- to 1965/- and 2168/- to 1740/- respectively. In Rumuruti, prices of black head persian mature male grade 3 and young male grade 2 went down by **12.4%** and **15.8%** from 3820/- to 3350/- and 3200/- to 2695/- respectively while the prices of red maasai young male grades 2 and 3 went down by **17.1%** and **13.3%** from 3160/- to 2120/- and 2260/- to 1960/- respectively.

Camel Prices

Markets		Habaswein		
Breeds		Somali		
Price		Current	Previous	Change%
Mature Female	G2	36920	-	-
	G3	24980	26852	-7 ↓
	G4	18000	19820	-9.2 ↓
Mature Male	G4	25765	-	-
Young Female	G3	18835	25755	-26.9 ↓
Young Male	G3	14870	16417	-9.5 ↓

Summary

- Comparative prices of camel were available only for Habaswein market and the trend is showing a general decrease in average prices.

Disclaimer: This information is provided for decision support, but should not be the sole source of information for livestock and land management decisions making. CNRIT, Texas A&M University, and the Ministry of Livestock Development are not responsible for any decisions made using the information provided here.

Generated by the National Livestock Market Information System (NLMIS) on 6/30/2011 9:33:42 AM

NLMIS... extending the technical and human capacity to meet market information needs and decision support for livestock producers, traders, and policymakers.

Requesting Information using SMS

To query volume and price data from the system, send the correct codes and you will receive an automated response.

1. Identify the market you are interested in and its code. The markets and their respective codes are provided below:

Market	Code
1. Bangale	BAN
2. Barwesa	BAR
3. Chepareria	CHP
4. Chepkono	CHE
5. Emali	EMA
6. Ewaso Ngiro	EWA
7. Isiolo	ISI
8. Garissa	GAR
9. Garsen	GRS
10. Habaswein	HAB
11. Kimana	KIM
12. Kiserian	KIS
13. Kishaunet	KSH
14. Kolowa	KOL
15. Lodwar	LOD
16. Lolkuniyiani	LOL
17. Lomut	LOM
18. Mandera	MDR

Market	Code
19. Marigat	MAG
20. Marsabit	MAR
21. Merille	MER
22. Mombasa	MSA
23. Moyale	MOY
24. Mulot	MUL
25. Nairobi Dagoretti	NRBD
26. Nairobi Kiamaiko	NRBK
27. Nairobi Njiru	NRBJ
28. Nginyang	NGI
29. Oldonyiro	OLD
30. Orolwo	ORO
31. Rhamu	RHA
32. Rumuruti	RUM
33. Sololo	SOL
34. Suguta	SGT
35. Suswa	SUS
36. Wajir	WAJ

2. Go to your phone and create New Message.
3. Type the message **MK R** followed by the **Market code** of choice. For example if you are interested in **Mombasa**, write the message **MK R MSA** inserting a single space between **MK** and **R** and **R** and **MSA**.
4. Send the message to 0733 333 056 and wait for a response.
5. When processed the message will appear as follows:

SMS Message Processed: MK R MSA Result: Market Mombasa Cattle Mixed Avg. Volume 190 Cattle Mixed Immature Female G3 Avg. Price 5850 Cattle Mixed Immature Male G3 Avg. Price 5870 Cattle Mixed Mature Female G2 Avg. Price 24500 Cattle Mixed Mature Female G3 Avg. Price 15950 Cattle Mixed Mature Male G2 Avg. Price 26100 Cattle Mixed Mature Male G3 Avg. Price 16750 , 25/03/11 09:46:05,1,2

6. The system reports the latest data received within the last 2 weeks and if no such data are available you get a message reading as follows:

SMS Message Processed: MK R BAR Result: Market Barwesa No data for this market StartDate 2011-03-11 12:00:00; StopDate 2011-03-25 12:00:00, 25/03/11 09:41:31, 1,2